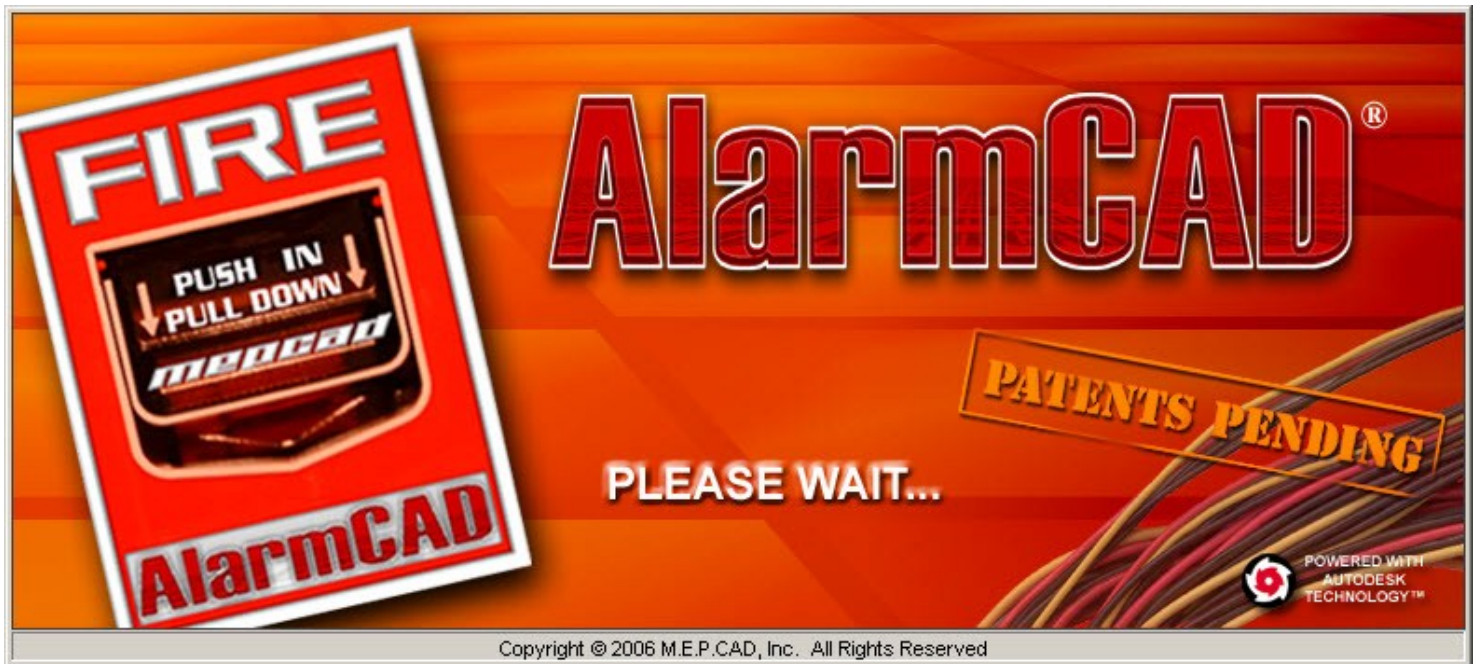


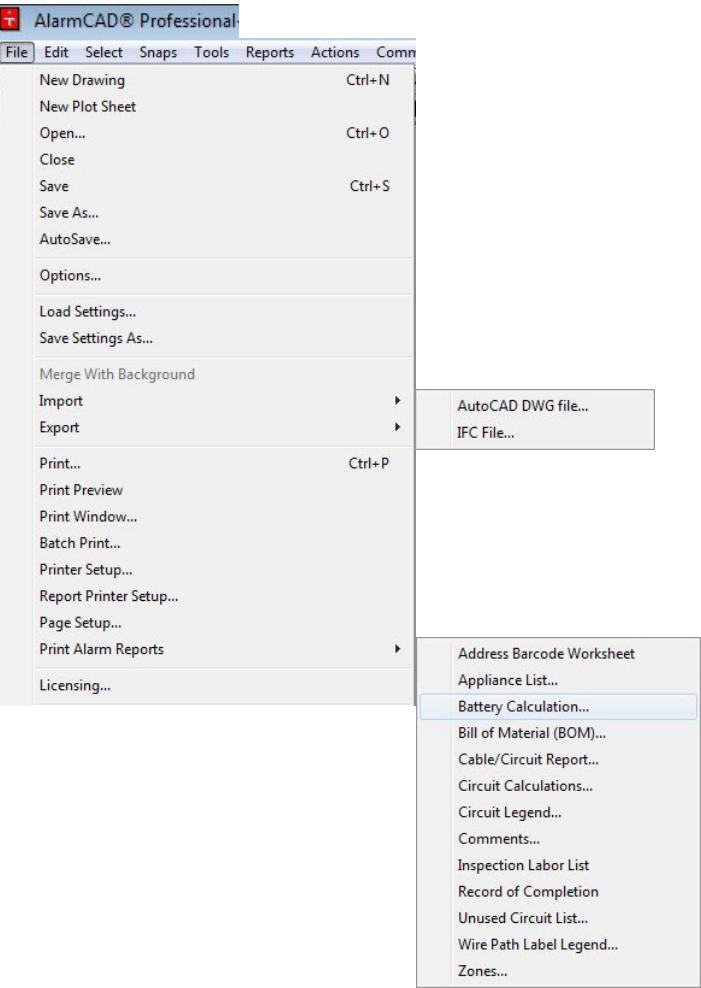
Comparison of AlarmCAD and AlarmCAD Lite Features



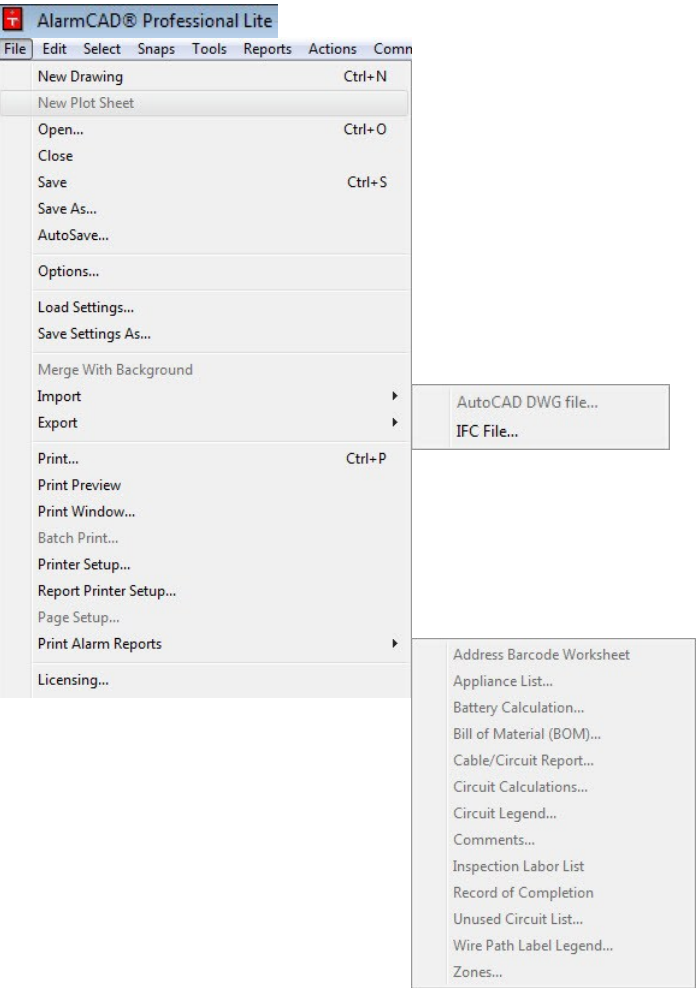
AlarmCAD features are displayed on the left hand side of the page in this document while the AlarmCAD Lite features are on the right hand of the page. Functions or commands greyed out on the right hand side are not available in the AlarmCAD Lite version.

When comparing the AlarmCAD for AutoCAD version to the AlarmCAD for AutoCAD Lite version the reduced features follow the standalone example of this document with the exception of Import/Export AutoCAD dwg files and printing and plotting. These are controlled by AutoCAD and remain the same between the full and lite versions.

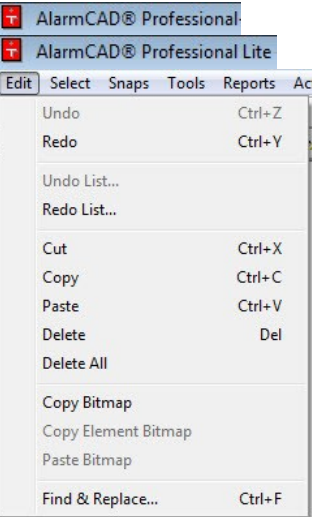
AlarmCAD Professional features



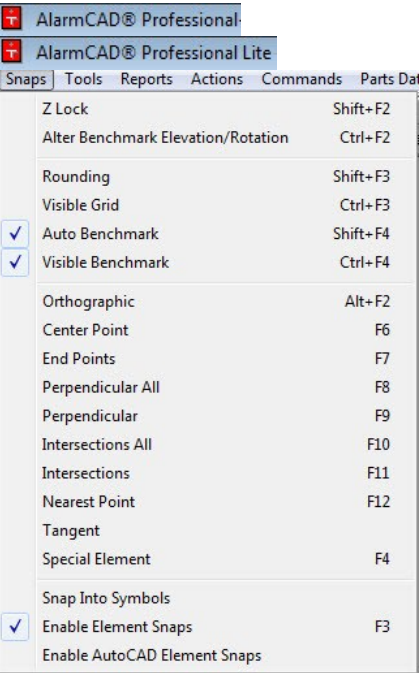
AlarmCAD Professional Lite does not provide the option to create New Plot Sheet, Import > AutoCAD DWG file, Page Set-up, or generate any reports from the Print Alarm Reports in 8.5" x 11" format.



AlarmCAD Professional and AlarmCAD Professional Lite have the same Edit choices.



AlarmCAD Professional and AlarmCAD Professional Lite have the same Snaps choices.



AlarmCAD Professional and AlarmCAD Professional Lite provide the same choices in the Select menu.

AlarmCAD® Professional

AlarmCAD® Professional Lite

SelectSnapsToolsReportsActionsComm

AllCtrl+A

All Like Selected

All Like Selected on Same Layer

All On Selected Layer(s)

By Address or Unique ID...

By ID...

By Part Number...

Every

LastCtrl+R

By Circuit Assignment...

All Circuit Terminating Devices

All In Rectangle

Every In Rectangle

Crossing Window

Alt-Window

Line Crossing

Rectangular Crossing

Invert SelectionCtrl+I

Deselect AllCtrl+D

Deselect Every

Toggle Ctrl Key

Select With Filter...

Select > Every

Select > Deselect Every

Benchmark

Protractor

Ruler

Address Barcode Worksheet

Alarm Component

Accessory Device

Aux Panel

Comm Phone

EOL Device

Initiator

Junction Box

Module

Notification Appl.

Panel

Power Supply

Relay Device

Wire path

Wire path w/conduit

Wire path wo/conduit

Zone

Low Voltage System Reference

Matrix Dot

Ohm Meter

Wire Path Label

Dimension

Leader Line

Text Box

Text Line

Text Table

Arc

Attribute

Crosshatch

Cylinder

DWG Dimension

Ellipse

Line Segment

Picture

Point

Polyline

Revision Cloud

Solid

Symbol

Triangle

Beam

Ceiling Grid

Column

Column Line

Roof Plane

Wall

Clip Plane

Group

View

Select > Every In Rectangle

Benchmark

Protractor

Ruler

Address Barcode Worksheet

Alarm Component

Accessory Device

Aux Panel

Comm Phone

EOL Device

Initiator

Junction Box

Module

Notification Appl.

Panel

Power Supply

Relay Device

Wire path

Zone

Low Voltage System Reference

Matrix Dot

Ohm Meter

Wire path label

Dimension

Leader Line

Text Box

Text Line

Text Table

Arc

Attribute

Crosshatch

Cylinder

DWG Dimension

Ellipse

Line

Picture

Point

Polyline

Revision Cloud

Solid

Symbol

Triangle

Beam

Ceiling Grid

Column

Column Line

Roof Plane

Wall

Clip Plane

Group

View

AlarmCAD Professional and AlarmCAD Professional Lite have the same choices in the Actions menu.

AlarmCAD® Professional

AlarmCAD® Professional Lite

ActionsCommandsParts DatabaseAutoPRICER LVSettings

Hide Layers of Elements

Match

Bind XRef Symbols...

Create Symbol...Shift+F9

GroupCtrl+F9

Split

Array...Ctrl+F11

Cleanup IntersectionsCtrl+F12

Mirror...Shift+F11

Offset Move/Copy...

Rotate...

Round

Scale...

Stretch Lines...

Trim/ExtendShift+F12

Cleanup Text...

Copy/Flatten Text

Flatten

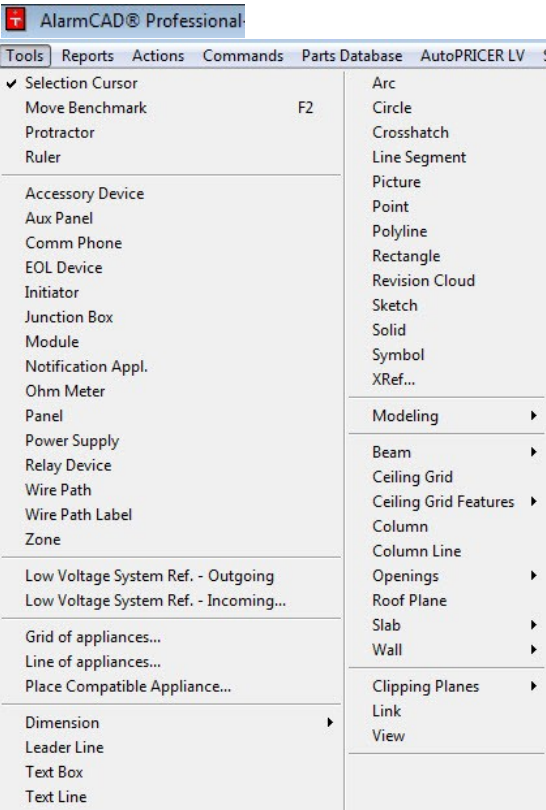
Flatten Dimensioning

Resize TextTable Reports to be the same width

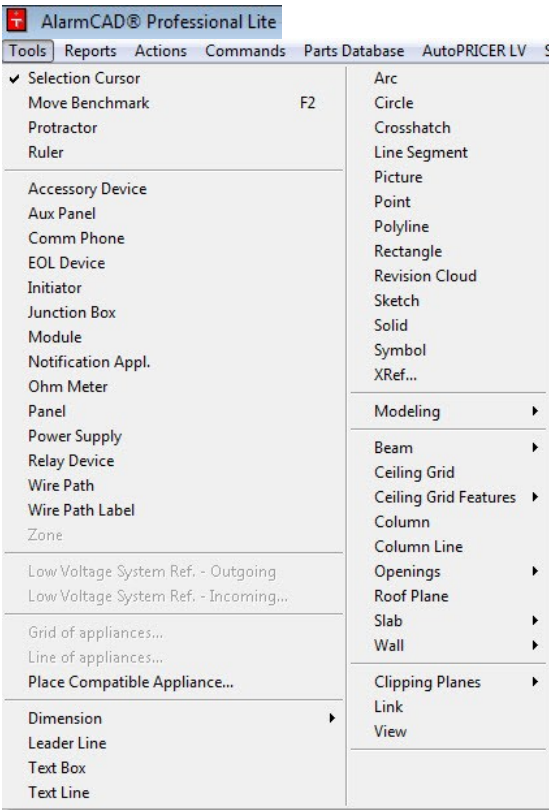
Set Text Angle

Spell Check the Drawing

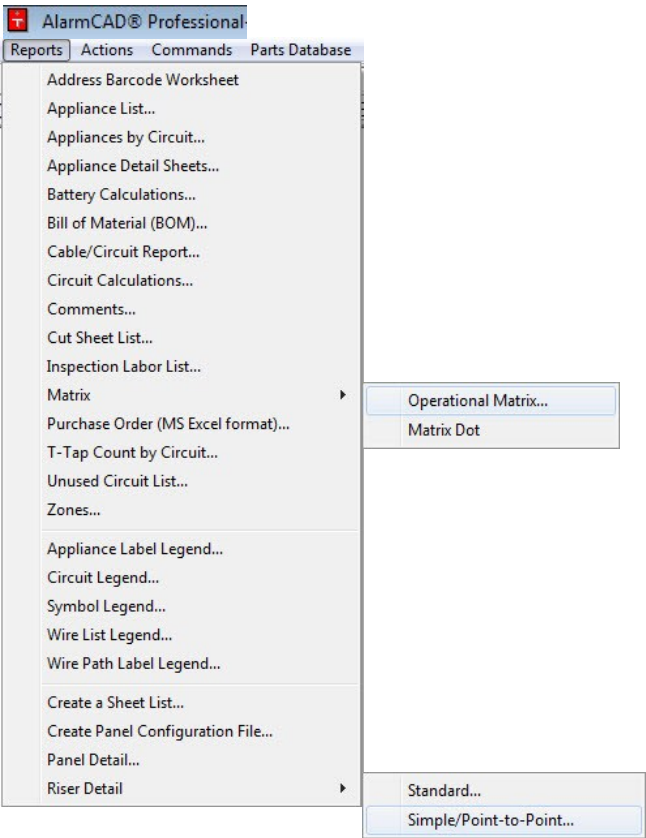
AlarmCAD Professional—Tools



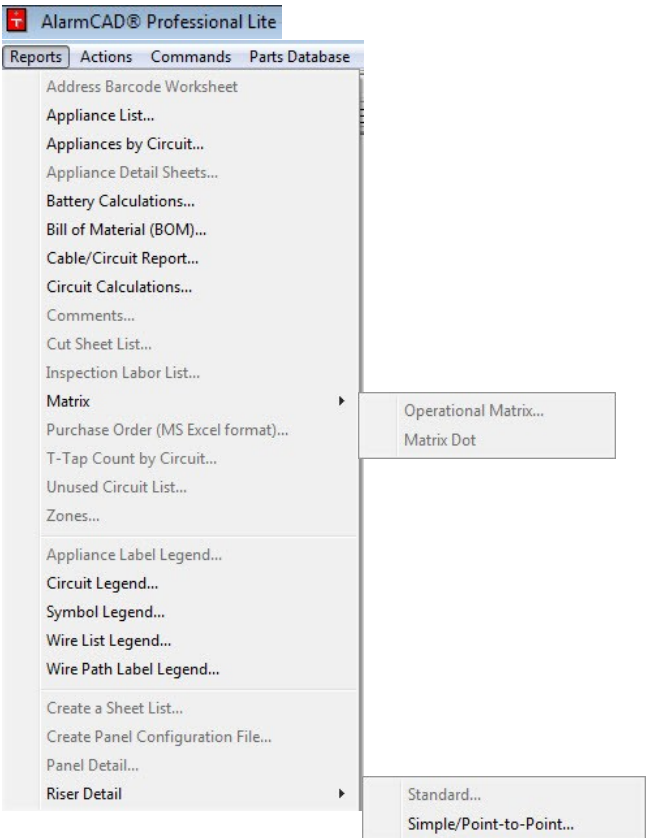
AlarmCAD Lite does not include the Zone command; Low Voltage System Ref commands (for linking multiple drawing files); Grid of Appliances or the Line of Appliances.

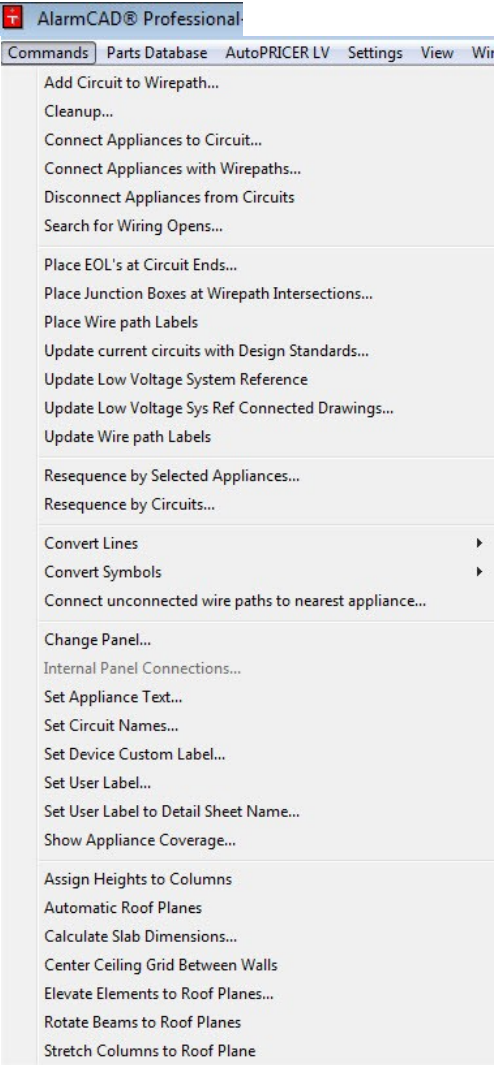


AlarmCAD Professional—Reports

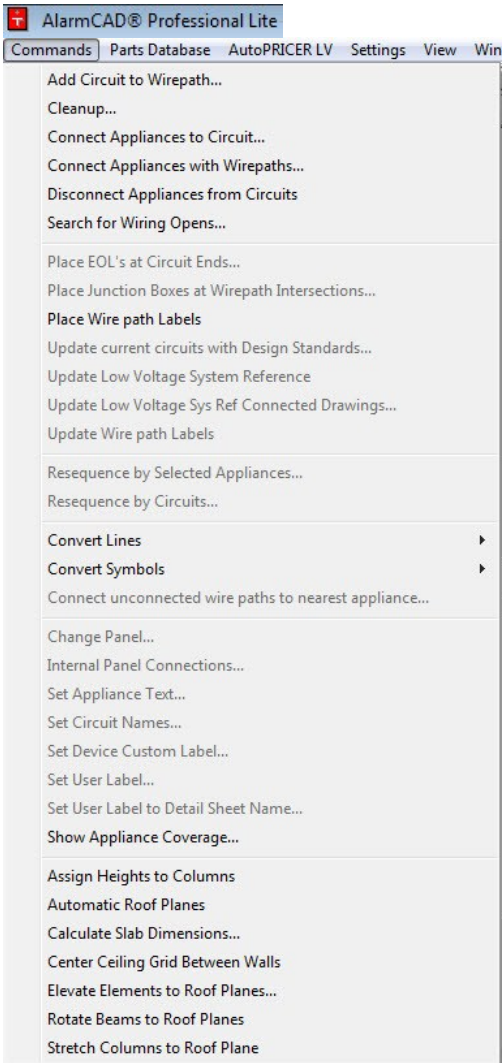
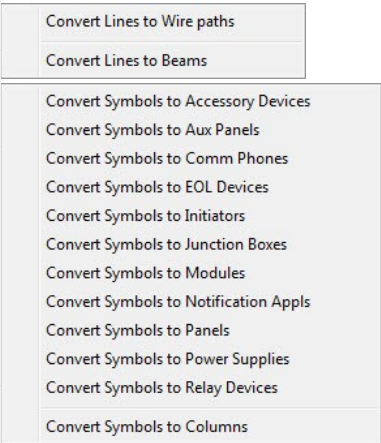


AlarmCAD Lite does not include Address Barcode Worksheet; Appliance Detail Sheets; Comments; Cut Sheet List; Inspection Labor List; Operational Matrix; Appliance Label Legend; Create a Sheet List; Create Panel Configuration File; Panel Detail or Standard Riser.

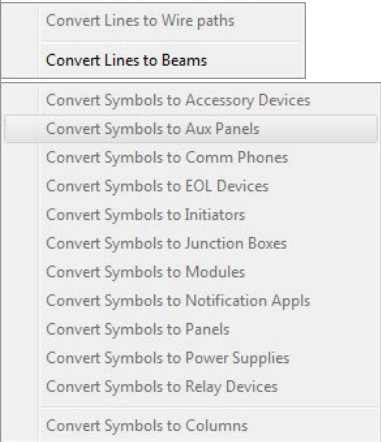




Commands Menu

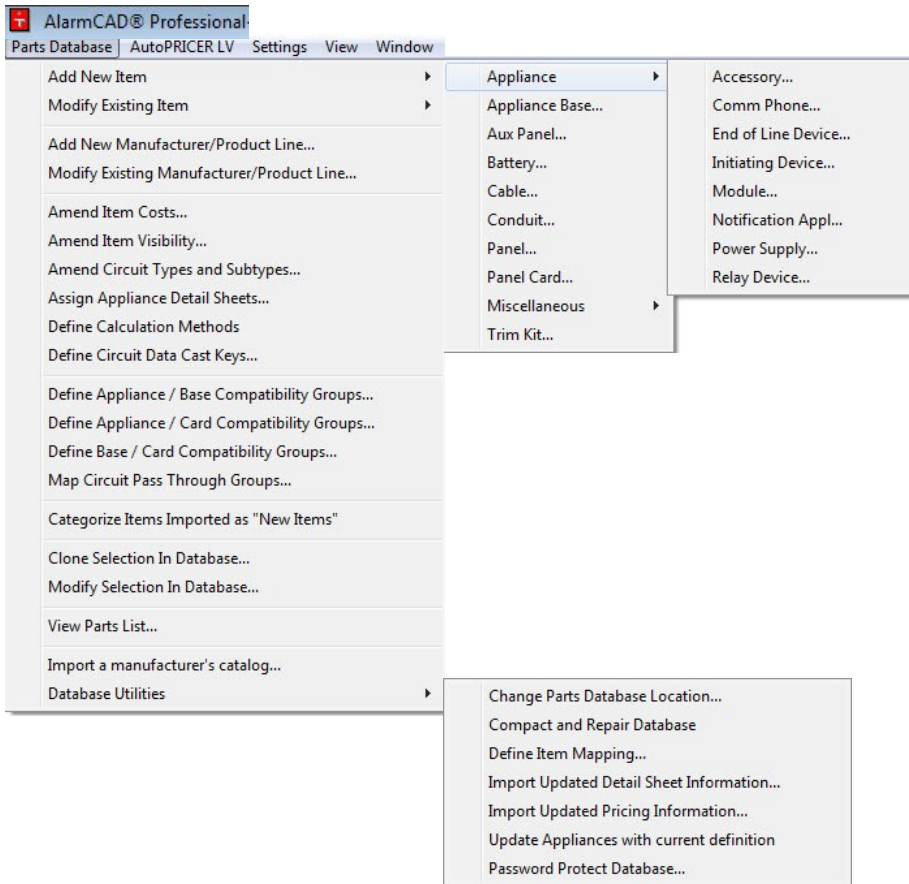


Commands Menu

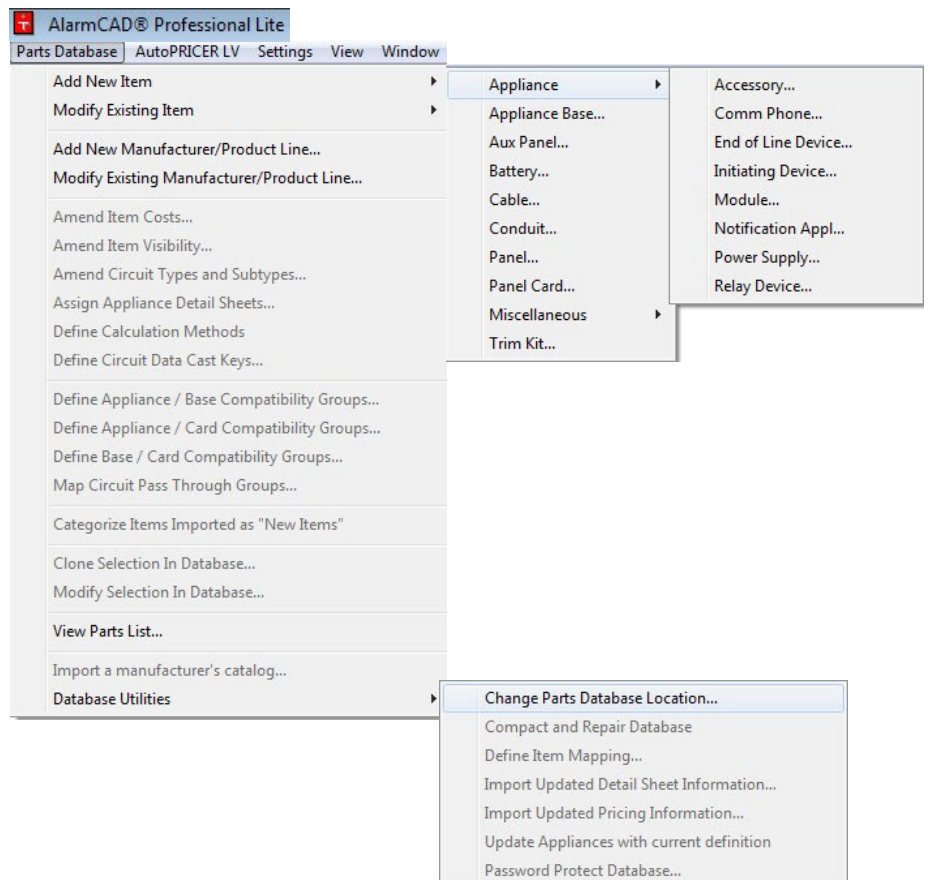


Many of the automated commands available in AlarmCAD Professional are not available in the Lite version. These commands automate functions such as Re-sequencing device addresses for SLC, NAC and other circuits; Update Wire path Labels; Update current circuits with Design Standards; Convert AutoCAD blocks into AlarmCAD Symbols; Convert AutoCAD lines into AlarmCAD Wire paths; Set User and Device Custom Labels and more.

AlarmCAD Professional — Parts Database



AlarmCAD Professional Lite — Parts Database

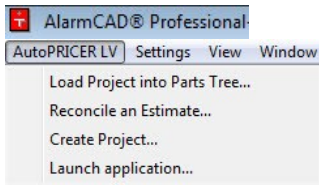


Many of the Parts Database features in AlarmCAD Professional are not available in AlarmCAD Lite. To amend cost, circuit types, circuit subtypes and define compatibility groups are not in the Lite version.

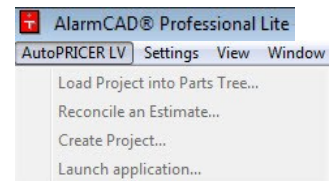
Database commands for cloning or modifying parts on the drawing are not available in the Lite version.

The ability to import or update pricing information, update appliances with current definitions or import a manufacturer's catalog is not available in the Lite version.

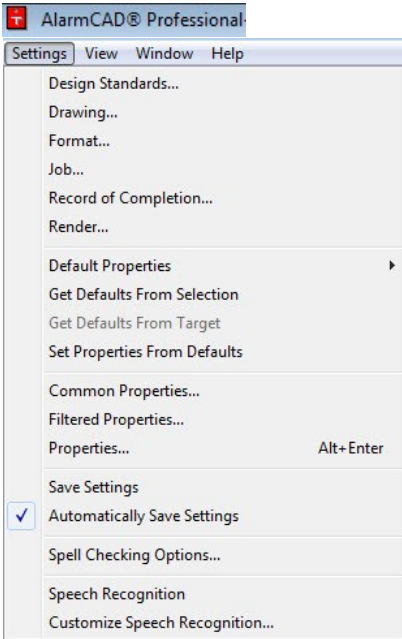
AutoPRICER-LV option



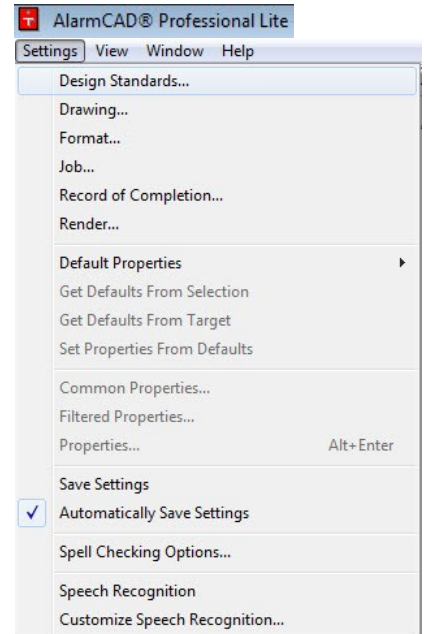
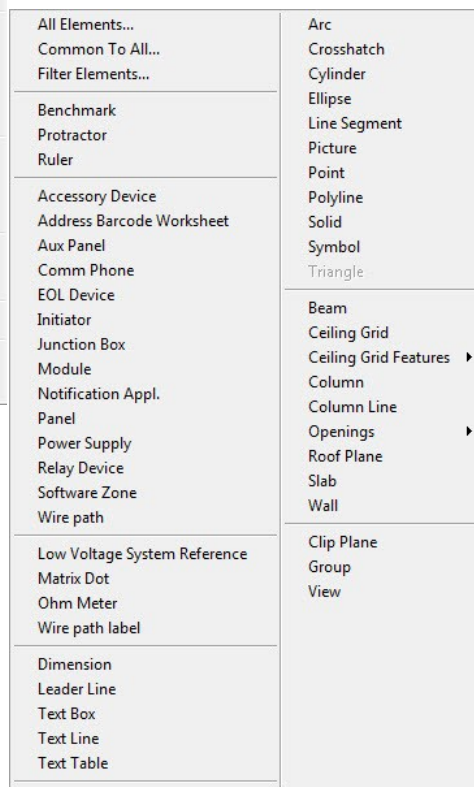
AutoPRICER LV interface is not available in the AlarmCAD Lite version. AutoPRICER LV is for estimating system projects.



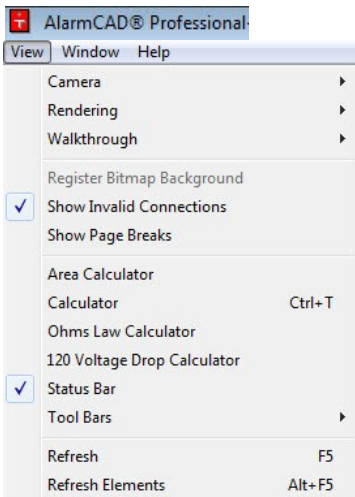
AlarmCAD—Settings



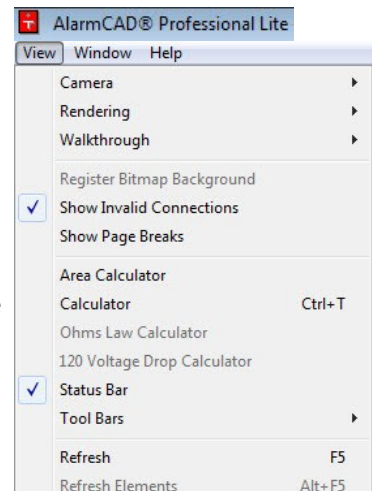
The Settings for both versions are the same with the exception AlarmCAD Lite does not have the Get and Set Default properties commands or the properties command

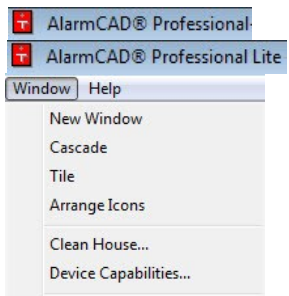


AlarmCAD—Views



AlarmCAD Lite does not provide the Ohms Law or 120 Voltage Drop Calculator.





The Widow and Help commands are the same for AlarmCAD Professional and AlarmCAD Professional Lite.

