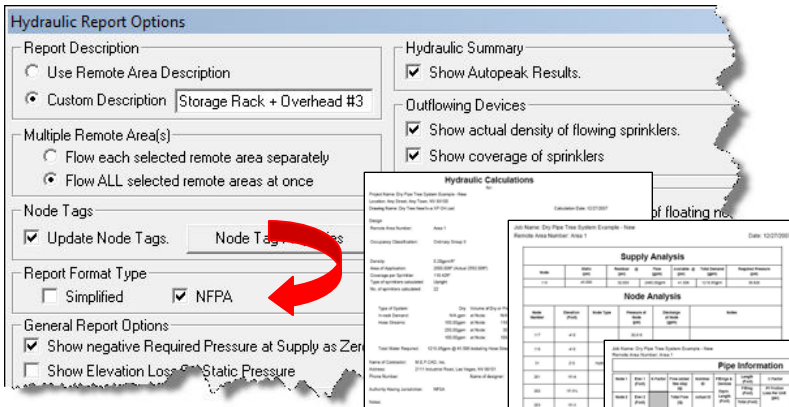


NFPA 13 Format?



Yes! M.E.P.CAD's New Simplified Line of Fire Sprinkler Design Programs now have 3 hydraulic report formats to choose from: the highly detailed and very comprehensive Standard Report Format, a Simplified Format and the all new NFPA Report Format that closely follows the latest NFPA-13 2007 Edition recommendations that are being adopted by many jurisdictions.

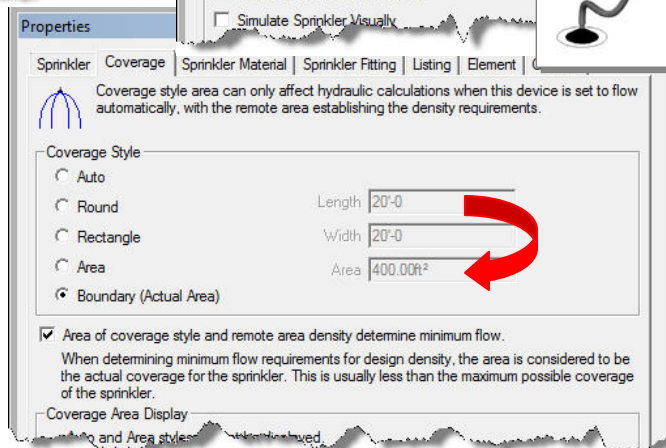
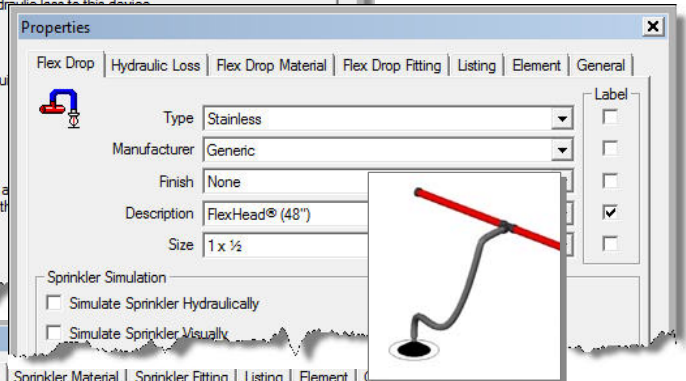
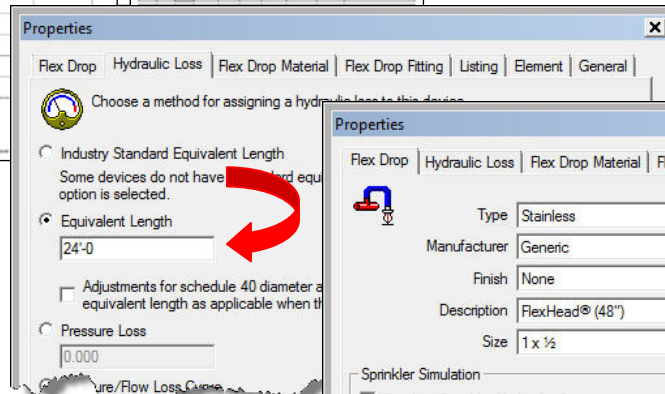
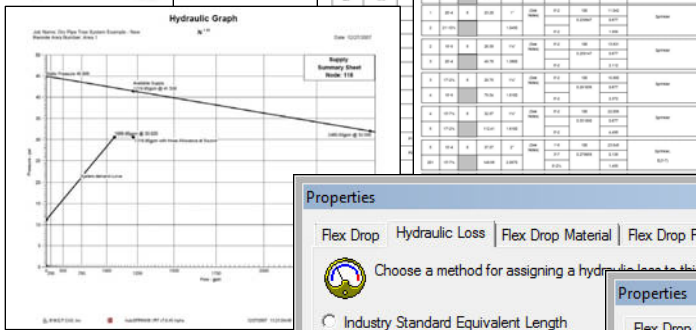
M.E.P.CAD's advanced technology has made it possible for AutoSPRINK to boast of its "patented" ability to instantly calculate any remote area, in real time, placed anywhere in the system. Hydraulic calculations are fully interactive, bi-directional and automated regardless of the completeness or complexity of the drawing. Make any changes to the drawing and the calculations are updated immediately. Or visa versa: make any changes to the calculations and, at the push of one button, the drawing is revised to match the changes made to the pipe and/or sprinkler sizes in the hydraulic calculations. What you see (draw) is exactly what you get with no need for other manual input!

Only in AutoSPRINK do you have such a choice! With many optional reports and 3 report formats to choose from, getting just the right hydraulic calculation output is easy.

If simplicity, increased design speed, 3D modeling accuracy and the incredible graphic abilities to produce high quality detailed drawings, for both AHJ's and field crews, are not enough to convince you to switch to AutoSPRINK VR7 then consider the astonishing ease, accuracy and flexibility of the hydraulic calculations and the fact that the stock lists are always 100% accurate... automatically! VR7 programs incorporate a completely redesigned drawing interface that is greatly simplified for speed and convenience. There will not be a day that goes by that you won't find a new feature, command, wizard or just an easier way of doing something that will continue increasing your proficiency indefinitely.

Just imagine what AutoSPRINK can do for you!

For more information, please visit our website and then call us or email [sales@mepcad.com]



FlexHead® connections to sprinklers, ESFR, Extended Coverage or any type of sprinkler or nozzle are all automatically included in the hydraulic calculations.



AUTO SPRINK

FIRE SPRINKLER COMPUTER AIDED DESIGN PROGRAM

VR7

4495 West Hacienda Avenue, Suite 1 Las Vegas, NV 89118-1541
 Telephone: (702) 380-3200 Toll-free: (888) 239-1345
 Fax: (702) 380-1275 Website: www.mepcad.com