



Plotting with Title Blocks on Sheet Tabs:

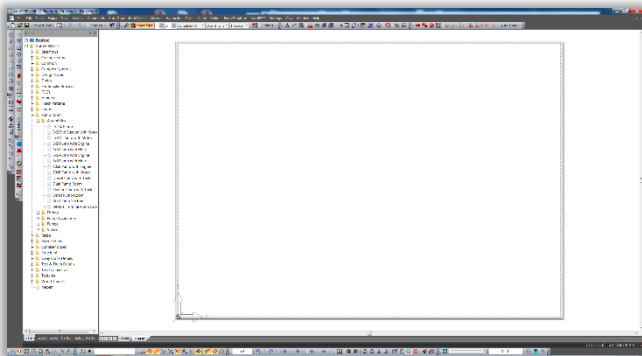
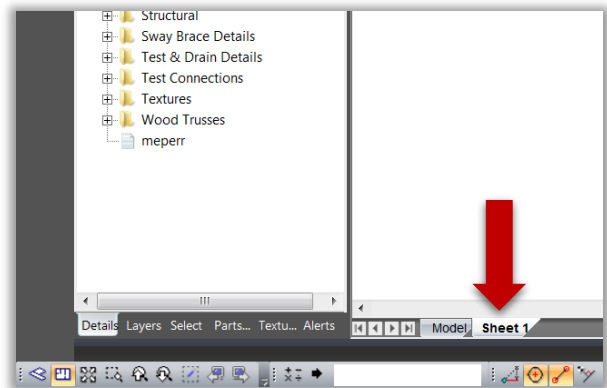
One of the most significant changes in AutoSPRINK from Version 11 to 12 is in the way you'll set up your drawings for plotting. The following will guide you through the process of setting up a file to plot in AutoSPRINK 12, using your AutoSPRINK VR11 .cap file as a template for your title block.

Please note it is NOT necessary to convert your VR11 .cap sheets into AutoSPRINK 12 files.

Open AutoSPRINK 12.

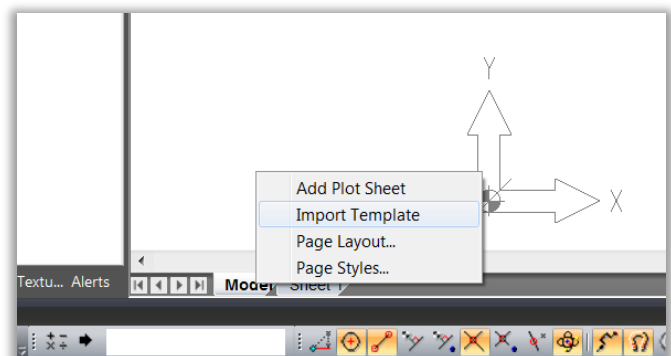
Click on the "Sheet 1" tab at the bottom of the Drawing Space.

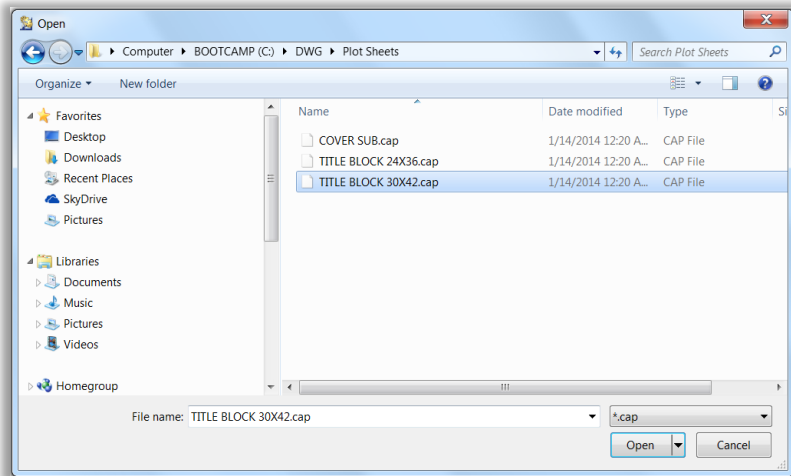
This is where you'll put your title block, notes, and possibly details; everything you used to put in your .cap file. You'll notice it has the same appearance as if you had opened a .cap file.



The Import Template command is accessed by right-clicking on any of the tabs at the bottom of the screen. The command will always create a new tab, and import the selected file into that tab.

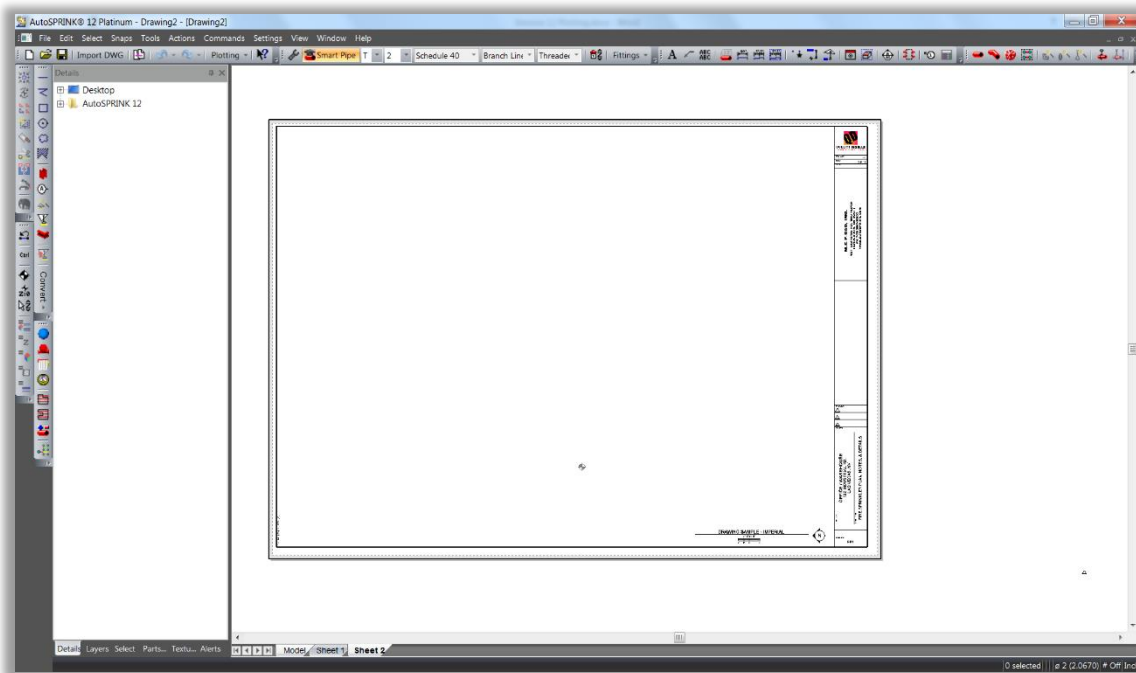
Right-click on either the Model tab, or the Sheet 1 tab, and select 'Import Template'



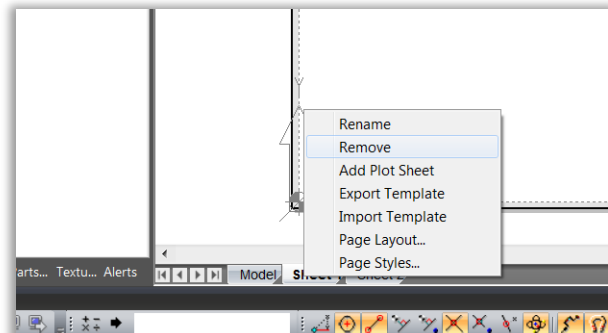


Browse to your desired title block file (.cap), and click Open.

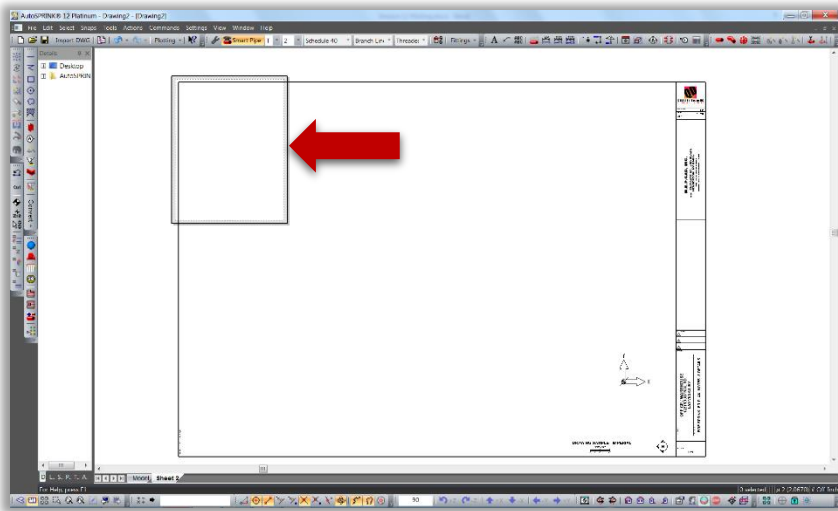
A new Sheet Tab will be created, and the title block will be imported.



At this point, you can delete the Sheet 1 tab if desired. Simply right click on the Sheet 1 tab, and click 'REMOVE':

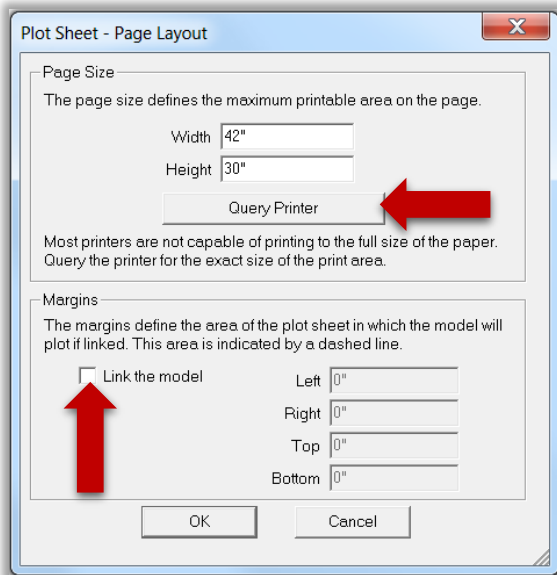
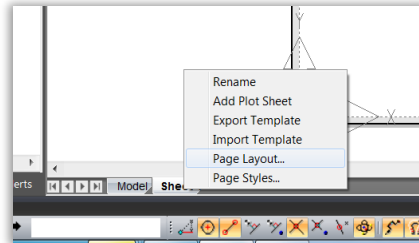


The sheet tab will automatically display the size and shape of the paper that you're plotting to, as specified in your current Plotter Settings.



In the case above, the plotter is set to 8-1/2 x 11, as if plotting to a standard printer. After changing the Plotter Settings to plot an E1 sheet (30x42), you'll need to update the Sheet Tab layout.

Right click on the 'Sheet 2' tab and click on 'Page Layout':

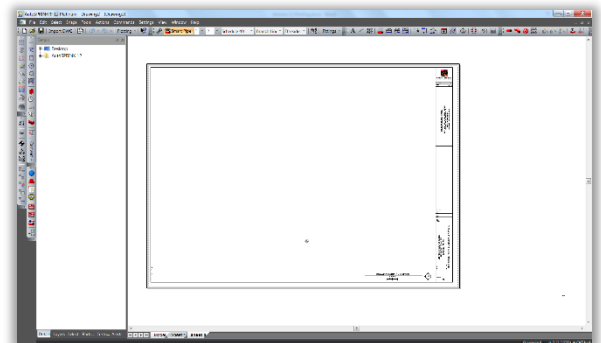


Click the "Query Printer" button. This will set the size of the printable area in your Sheet Tab according to the settings of your current plotter.

Uncheck the "Link to Model" Box.

Click 'OK'

The paper outline should now match the 30x42 title block:



Note: Always make sure to uncheck the "Link to Model" box in Page Layout when plotting using View elements in the Sheet Tab (preferred method). View elements on the Sheet tab will not plot correctly if this is checked.

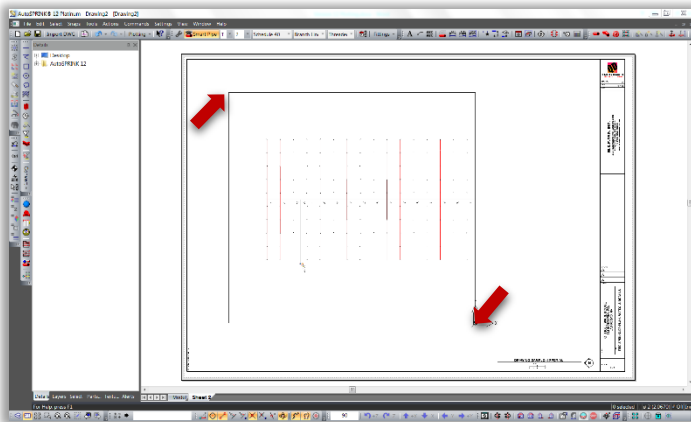
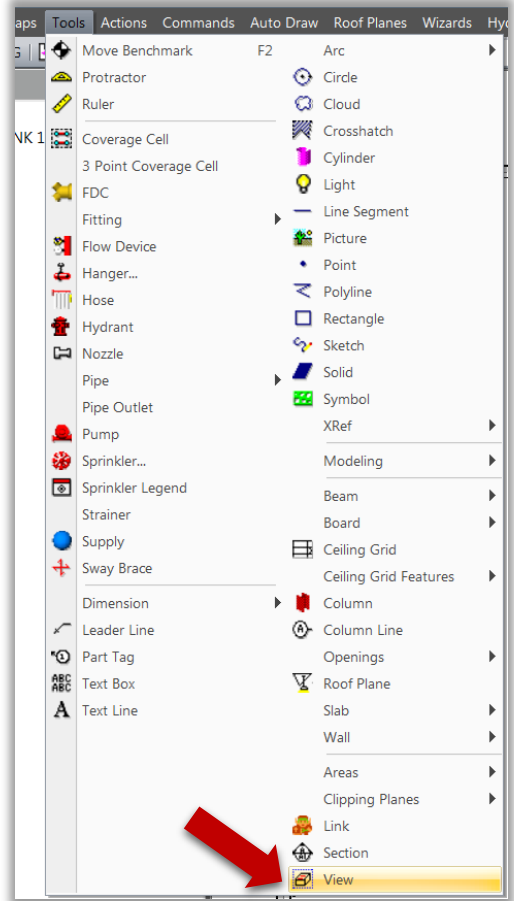
Place View Element(s):

The View elements in AutoSPRINK 12 are vastly improved over past versions. Their behavior when panning and rotating within the View is essentially the same, but with drastically improved speed.

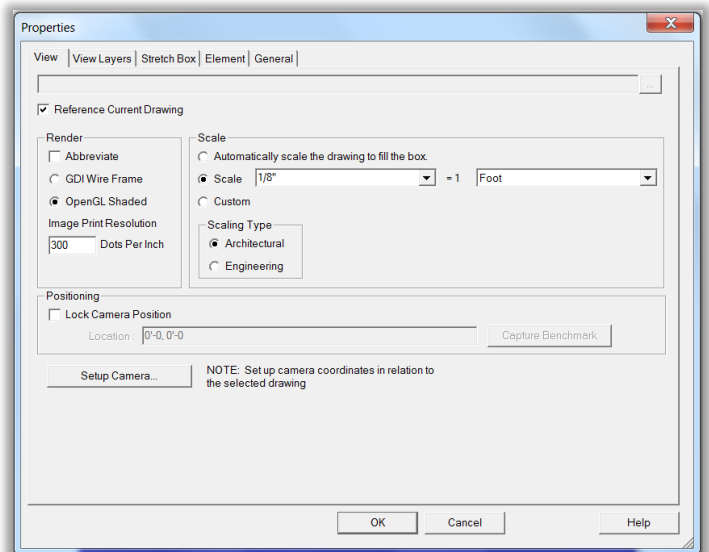
Borders of View elements can now be adjusted, using grips, without the image moving within the view. In other words, the image of the drawing in the View remains static, so that moving the border of the view lets you see more or less of the model space image.

Access the View element from the TOOLS dropdown menu:

And draw a large View element by clicking at two opposite corners:



Bring up the Properties of the View element by double-clicking on the View border:



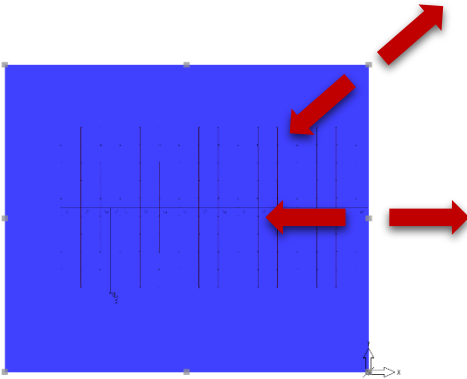
Within View Properties, Verify the following settings:

- 'Reference Current Drawing' box is checked
- 'OpenGL Shaded' is checked
- 'Dots Per Inch' is set to 300
- 'Scale' is set as desired

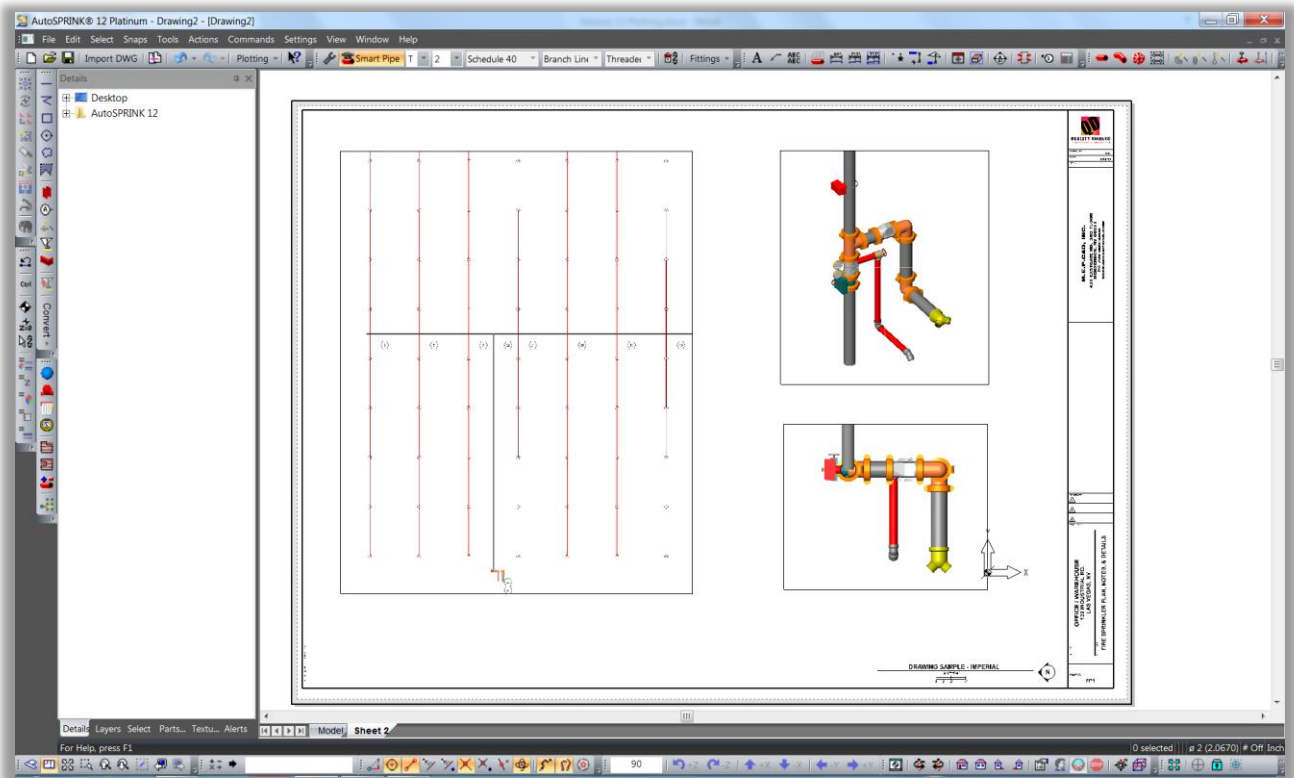
Then click 'OK'

The image in the View can be moved and rotated by selecting the View and using middle mouse gestures as you would to navigate in the model.

The borders of the View can be moved to enlarge or shrink the size of the View by clicking on one of the 8 grips on the borders and dragging it in the desired direction

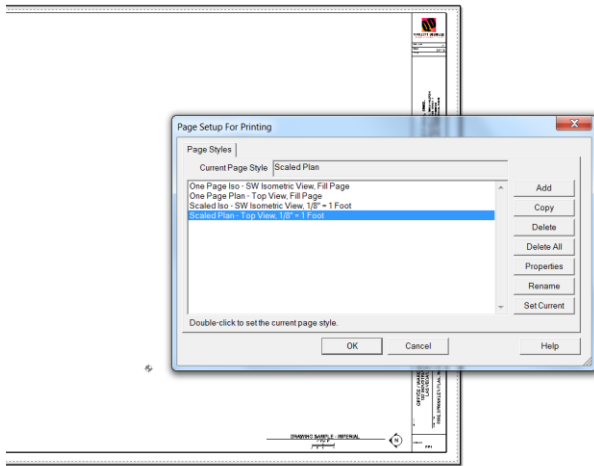
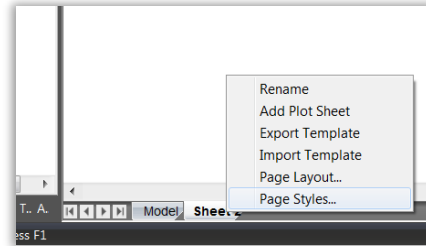


Multiple Views with different scales can be used in any Sheet Tab:

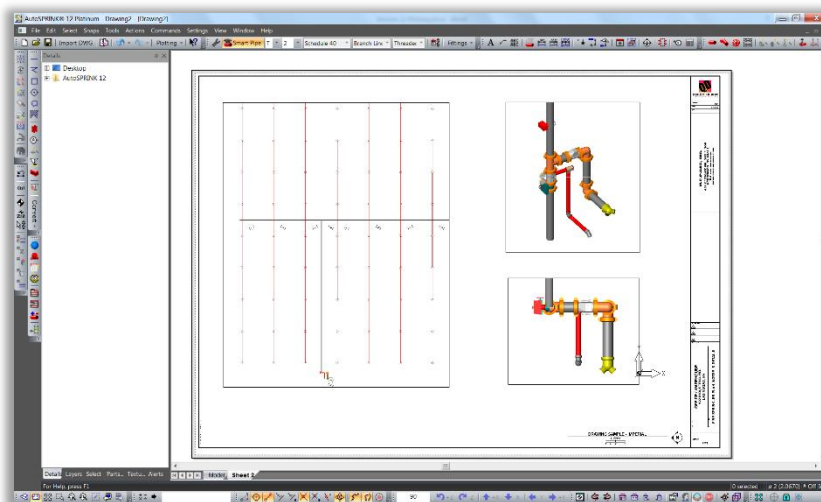
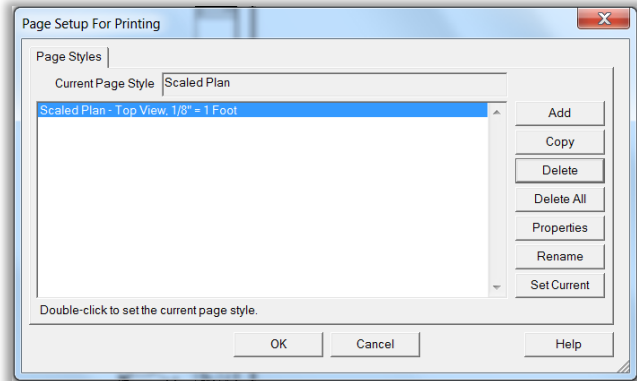


If you've imported a .cap file that included multiple Page Styles, now is a good time to delete all but the standard "Top View". The other Page Styles are obsolete in AutoSPRINK 12 and templates should be saved with only the Top View page style.

Right-click on the 'Sheet 2' tab, and click on 'Page Styles':

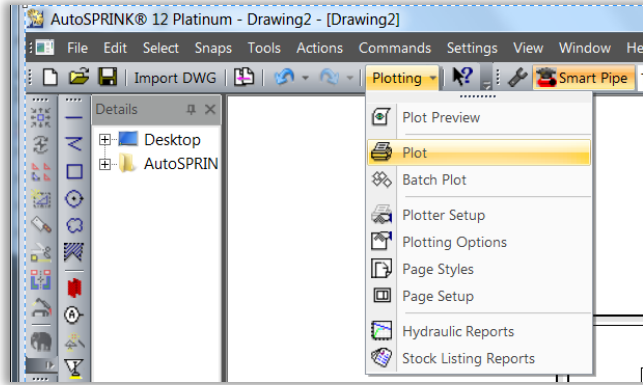


Select each of the unwanted Page Styles and delete, then click 'OK':

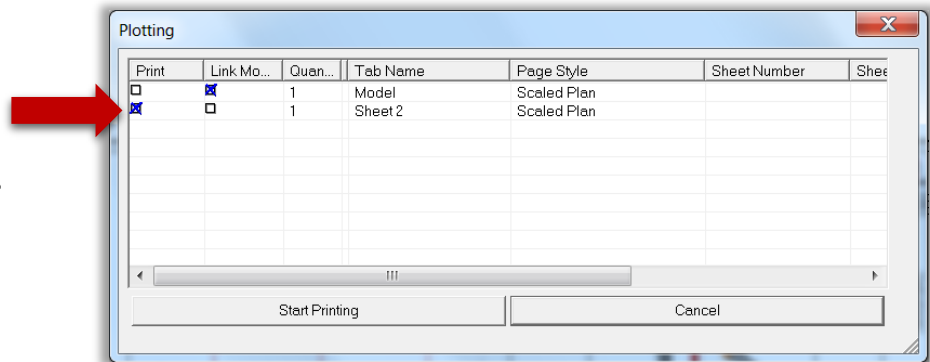


Now you're ready to plot

Click on the 'Plotting' fly-out, then click on 'Plot':



This brings up the Plotting dialogue:



Make sure the sheet to be plotted is checked in the first column.

Click on 'Start Printing'