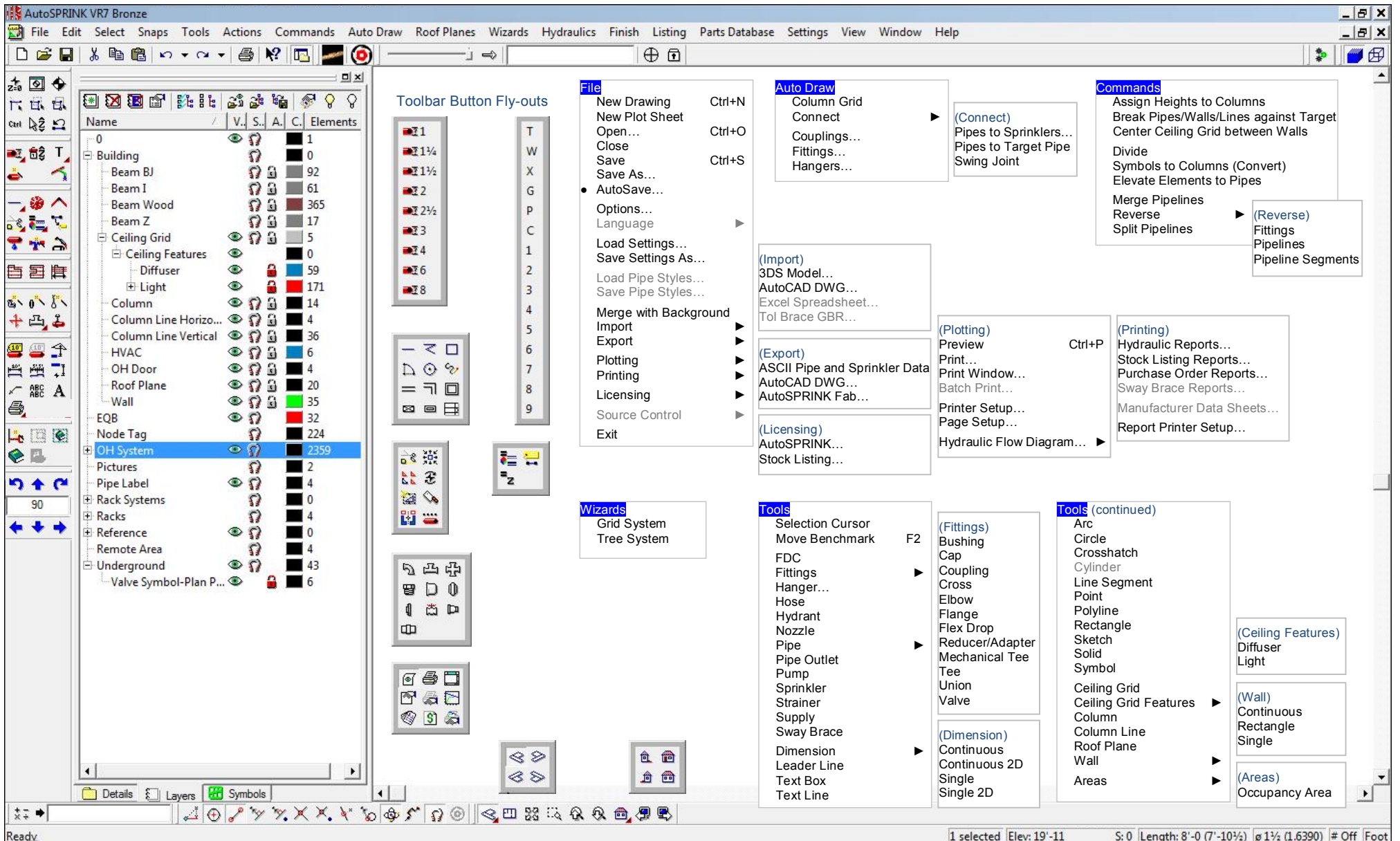


## Bronze Level VR7 Toolbars and Menus












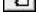



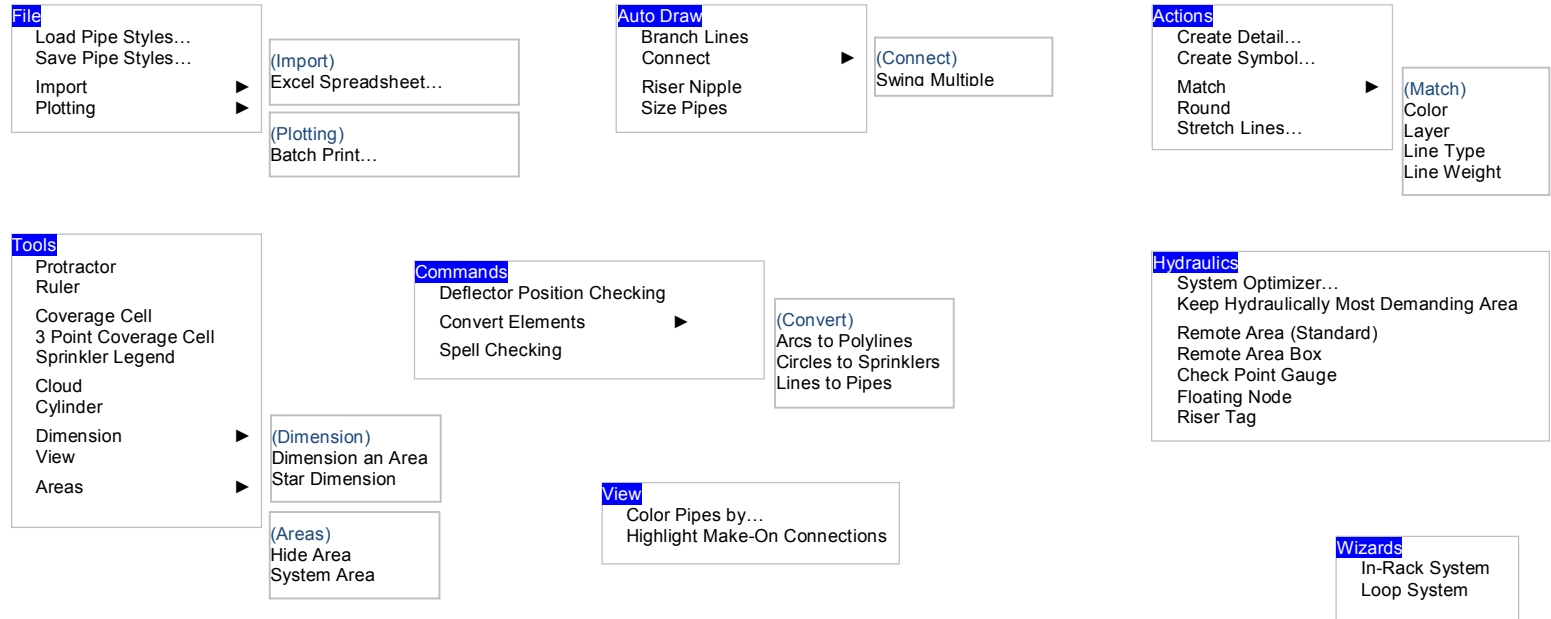
The all new VR7 'Simple Interface' with Fly-Out Toolbars, shown above, is available in all Levels of the program. The program features, commands, wizards, toolbars and toolbar button arrangements vary with the program Level. Only the Bronze Level tools are shown here.



# Additional Silver Level VR7 Features, Commands, Tools and Wizards

## Additional toolbar buttons available in this Level:

-  Auto Branch Lines
-  Auto Riser Nipple
-  Auto Size Pipes
-  Swing Multiple
-  In-Rack System Wizard
-  Loop System Wizard
-  Remote Area (Standard)
-  Remote Area Box
-  System Optimizer
-  Dimension an Area
-  Match Color
-  Match Layer
-  Match Line Weight



## Additional Toolbar Fly-Outs available in this Level:

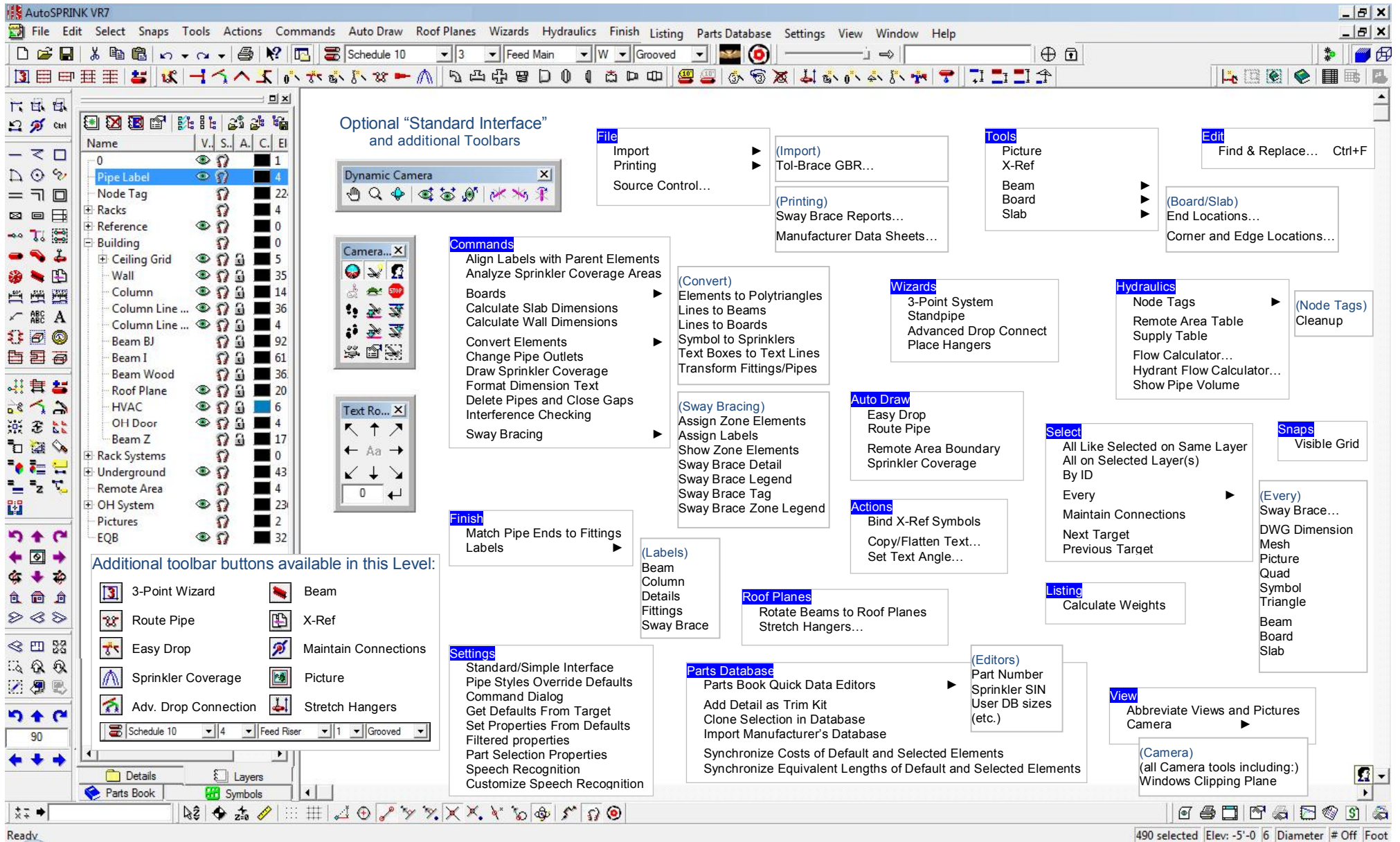


- Coverage Cell View
- Hide Area
- Auto Roof Planes
- Color Pipes By
- Check Point Gauge



- FF – Centerline
- BOB – Centerline
- TOB - Centerline)
- TOS – Centerline

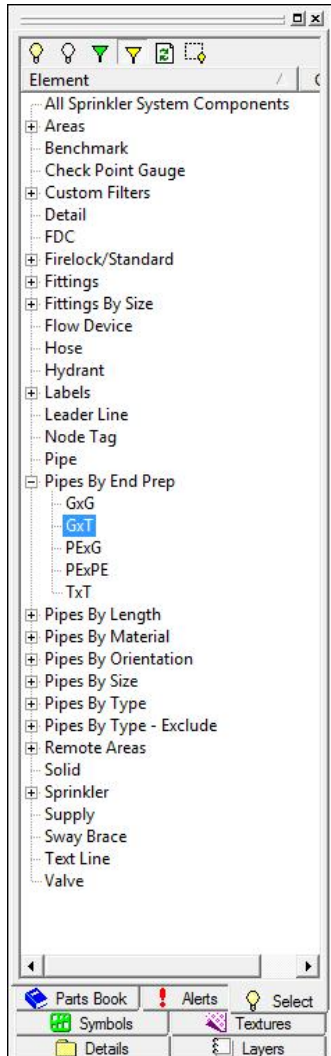
# Additional **Gold Level** VR7 Features, Commands, Tools and Wizards



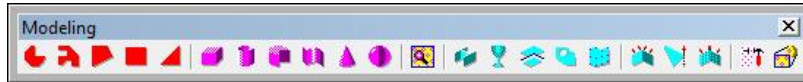
The 'Standard Interface', shown above, is a user-option to the 'Simple Interface' and is available in the Gold & Platinum Levels of the program. All toolbars and buttons shown are available in the Gold Level. Many of these toolbar buttons are also available in the Bronze & Silver Levels but are shown again here to fully illustrate the 'Standard Interface'.

# Additional Platinum Level VR7 Features, Commands and Tools

Additional 'Parts Tree' Tabs



'Standard Interface' Toolbars



'Simple Interface' Toolbar buttons and Fly-outs

